

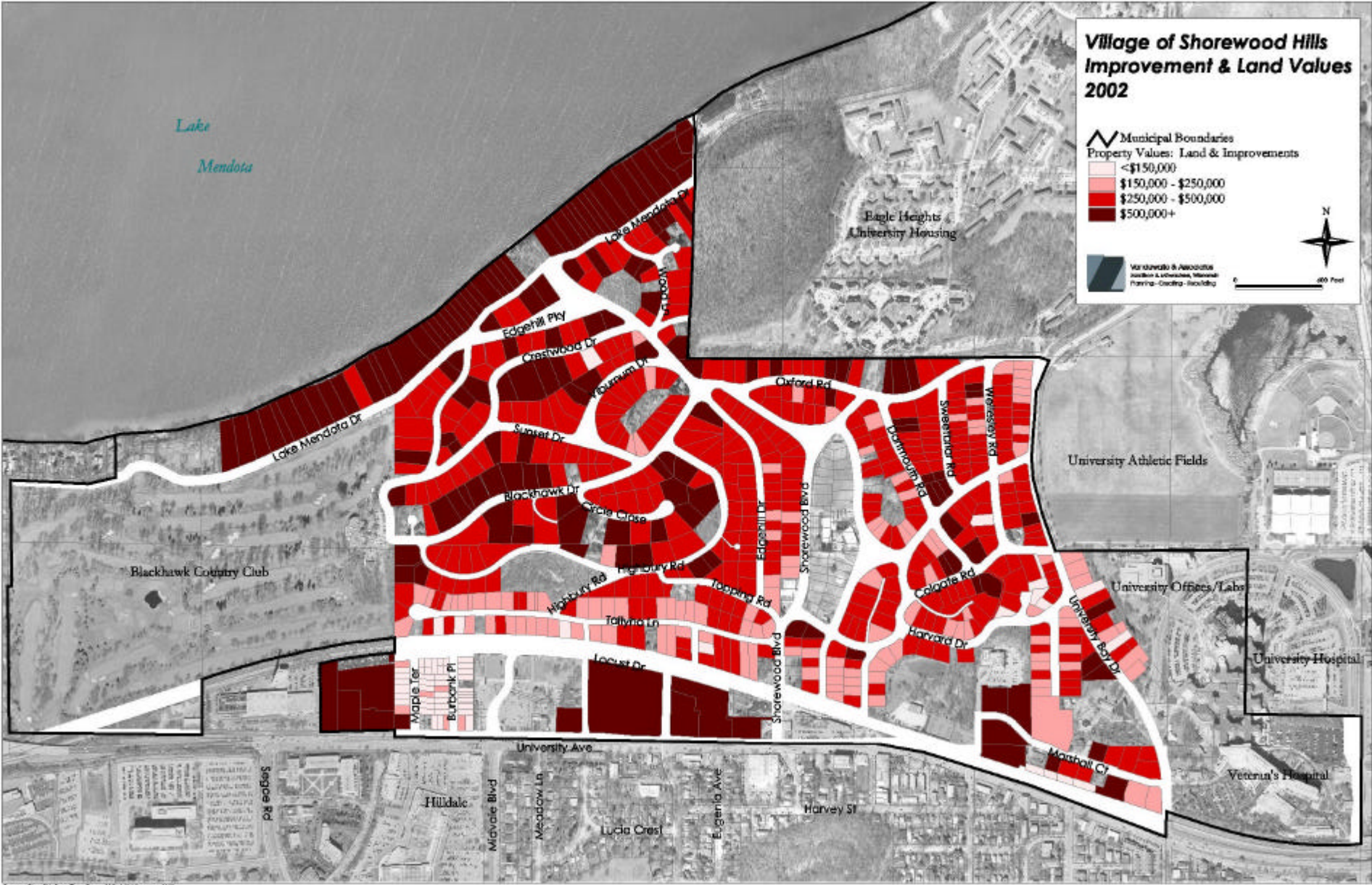


Village of Shorewood Hills Improvement & Land Values 2002

 Municipal Boundaries
 Property Values: Land & Improvements
 < \$150,000
 \$150,000 - \$250,000
 \$250,000 - \$500,000
 \$500,000+

 North Arrow & Scale
 0 400 Feet



Source: City of Madison, Esri, County GIS, & V.I. Technology 2002